



Mather LifeWays

■ HIGH-RISE, READERS' CHOICE

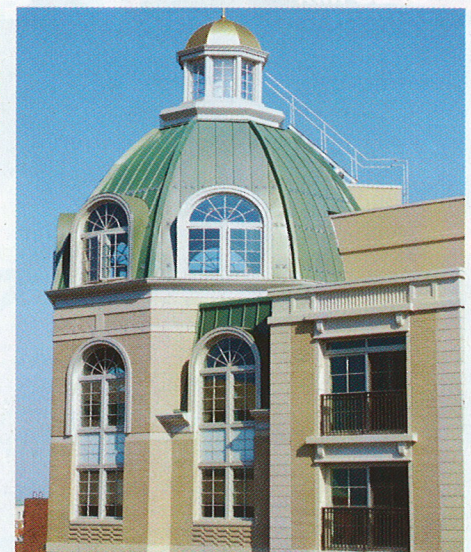
The Mather | Evanston, Ill.

The Mather, a “new urbanist” continuing care retirement community, offers 141 homes and unparalleled views of Lake Michigan. Its masonry façade blends with the neighborhood’s masonry buildings from the early 1900s.

A rustic cast stone base provides eye level scale and texture, while soldier courses at window heads, cast stone accent bands, and decorative brick panels add further character. The Norman brick clad tower features cast stone Juliet balconies, quoining, and parapet panels.

Construction logistics were challenging, as the site was only accessible from the west and south sides. Contractors surrounded the façade with almost 1500 linear feet of Hydro Mobile components, and the entire assembly was enclosed and heated, so work could continue through the winter. Masons shifted manpower from location to location as other trades required access to the scaffolding. This allowed the entire skin to be completed as the scaffold was raised and lowered.

Exterior masonry construction involved attaching cast stone and brick to a heavy-gauge stud wall sheathed with DensGlass gypsum sheathing and weather barrier. The project team regularly held quality control meetings to maintain integrity of the wall before and during masonry installation. Shelf angles and coursing were especially complicated, since cast stone and brick coursing were not always aligned.



Project Participants

- Owner:** Mather LifeWays, Evanston, Ill.
- Masonry Contractor:** Illinois Masonry Corp., Lake Zurich, Ill.
- General Contractor:** Power Construction Co., Schaumburg, Ill.
- Architect/Designer:** Solomon Cordwell Buenz & Associates, Chicago
- Landscape Architect:** Daniel Weinbach & Partners, Chicago
- Structural Engineer:** Halvorson & Partners, Chicago
- Masonry Suppliers:** Bricks Inc., Aurora, Ill.; Northfield Block Co., Mundelein, Ill.; Architectural Cast Stone, West Chicago, Ill.